

G001800

Manual Call Point IP24 **MCP-C (GB)**

Part no 5200010-01A

System: All Salwico Fire Alarm Systems

General Description

The MCP-C is a manual call point for indoor environment and is designed for conventional fire alarm systems.

Pressing the glass causing it to crack activates the fire alarm. A protective plastic coating on the glass prevents operator injury.

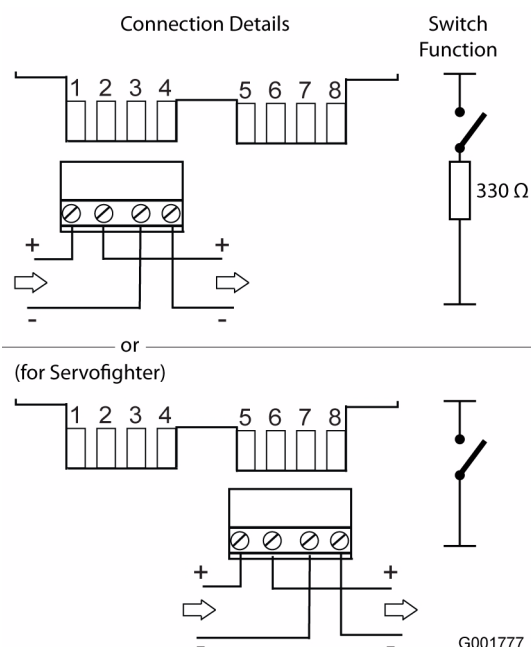
Resettable elements can be ordered separately.

The call point can be tested with a special key included in the delivery.

Data

Nominal voltage	24 VDC
Working voltage	16-30 VDC
Supervising current	0 mA
Alarm current	~90 mA
Ingress protection	IP24
Temperature range	-10°C to +55°C
Ambient humidity	0 to 95% RH
Material	PC/ABS
Colour	Red
Weight	160 g
Cable dimension	Ø6-14 mm
Certified according to	CE 0832-CPD-0642
Spare glasses (10pcs.)	Part no. 5200077-00A
Resettable elements (10pcs.)	Part no. 5200140-00A

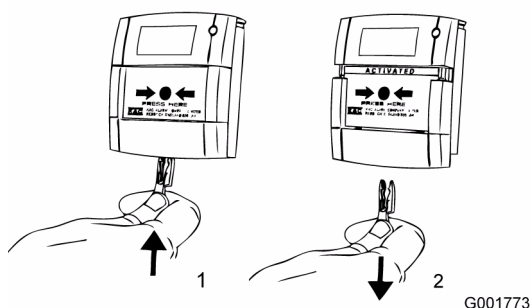
Connection



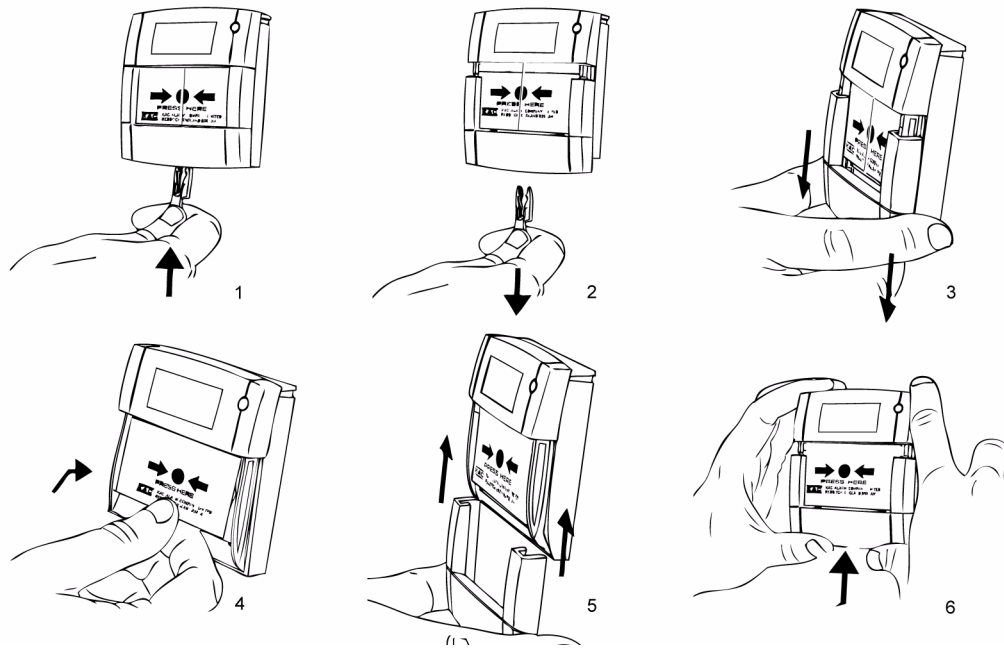
Note!

After the last section unit, add an End of line resistor between terminals 1 and 2 or 5 and 6 (for servofighter) according to system specification.

Test

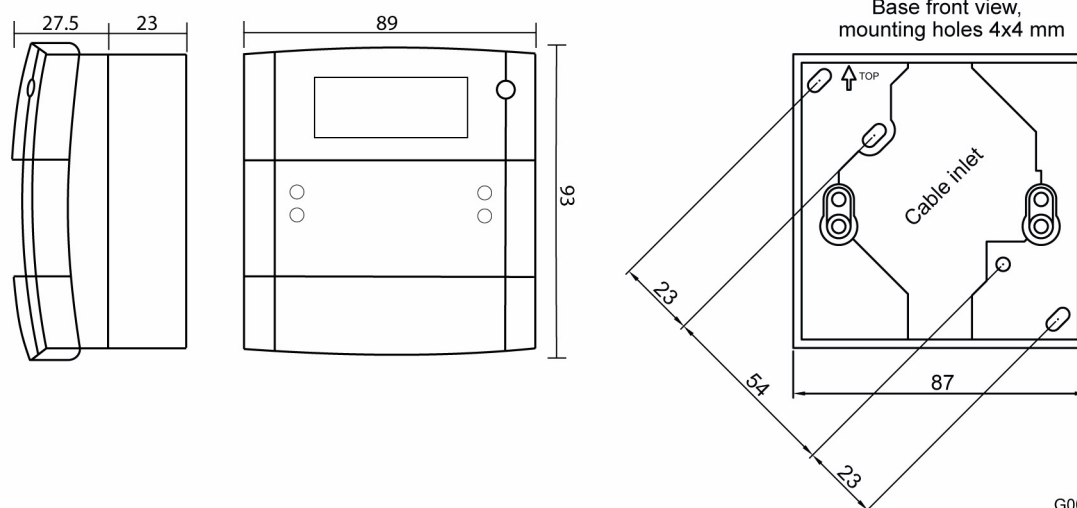


Change Glass



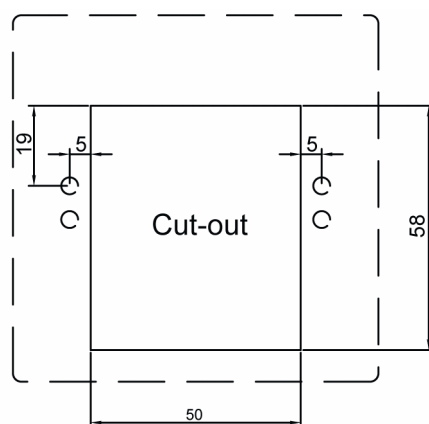
If a resettable element is used, perform steps 1+2+6 above. Should the element be broken, all steps must be performed.

Dimensions (mm)



G001771

Mounting Dimensions (mm)



G003141